

# JUNIOR ICAP

(INDIVIDUAL CAREER AND ACADEMIC PLAN)

WHICH PATH WILL YOU CHOOSE AFTER HIGH SCHOOL?



# TRANSCRIPT - GRADUATION REQUIREMENTS

- #1 – 25 CREDITS (SEE TRANSCRIPT)

- #2 – 2.0 GPA

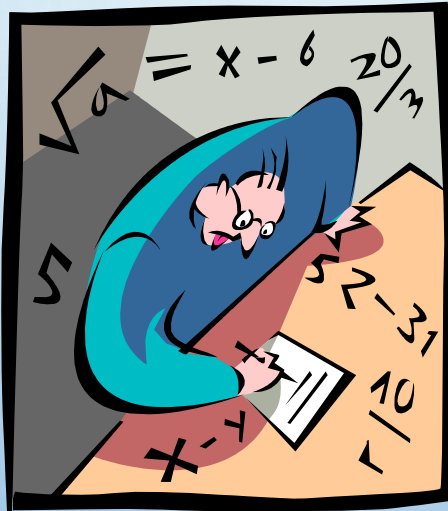
A = 4.0

B = 3.0

C = 2.0

D = 1.0

F = 0.0



- #3 – TESTING PROFICIENCY

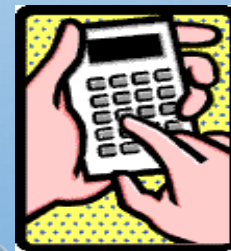
- SAT-430 ON ENGLISH AND 460 ON MATH

- ACT WORK KEYS

- ACT – 17 COMPOSITE

- NWEA TESTING

- APA (ALTERNATE PROFICIENCY ASSESSMENT)



# COLLEGE READINESS

## H.E.A.R. OR HIGHER EDUCATION ADMISSION REQUIREMENTS - COLORADO

- ENGLISH – 4.0 CREDITS
- **MATH – 4.0 CREDITS**
- NATURAL/PHYSICAL SCIENCES (2.0 MUST BE LAB-BASED) – 3.0 CREDITS
- SOCIAL SCIENCES – 3.0 CREDITS
- **FOREIGN LANGUAGE – 1.0 CREDIT (OR MORE: VARIES FROM SCHOOL TO SCHOOL)**
- ACADEMIC ELECTIVES – 2.0 CREDITS
- **EXTRA CURRICULAR ACTIVITIES**
- LIST YOUR ACTIVITIES: WORK, SCHOOL CLUBS, SPORTS, CHURCH YOUTH GROUP...
- *REMEMBER, THESE ARE GUIDELINES. EACH COLLEGE IS DIFFERENT, AND TO GET THE MOST UP-TO-DATE INFO, CONTACT THE SCHOOL DIRECTLY BY GETTING ON THEIR WEBSITE OR CALLING THE ADMISSIONS OFFICE!*

# EARLY COLLEGE/CAREER EXPERIENCE

- **WCCC – WESTERN COLORADO COMMUNITY COLLEGE**
  - 11 DIFFERENT PROGRAMS, TRANSPORTATION PROVIDED TO/FROM SCHOOL, SOME HIGH SCHOOL CREDIT OFFERED AND COLLEGE CREDIT ALSO AVAILABLE
- **CC – CAREER CENTER**
  - 8 DIFFERENT CAREER PATHWAYS TO CHOOSE FROM, HANDS-ON EXPERIENCE!
- **CAREER INTERNSHIP/JOB SHADOW/BUSINESS WORK EXPERIENCE**
  - SPENDING PART OF YOUR DAY GETTING REAL-LIFE EXPERIENCE
- **COLORADO MESA UNIVERSITY OPTIONS**
  - HIGH SCHOOL SCHOLARS – TAKE COLLEGE COURSES ON YOUR OWN CAMPUS WITH YOUR HIGH SCHOOL TEACHERS
  - CONCURRENT – SPEND PART OF YOUR DAY ON CMU'S CAMPUS TAKING COLLEGE COURSES AND PART OF YOUR DAY AT FMHS
  - ASCENT – 5<sup>TH</sup> YEAR SENIOR PROGRAM, TAKE CLASSES ON CMU'S CAMPUS JUST AS A FRESHMEN WOULD, BUT TECHNICALLY YOU REMAIN AN FMHS STUDENT



## JUNIOR TIMELINE

- MIDDLE SCHOOL CREDITS – BY MARCH 1<sup>ST</sup>
- STATE MANDATED SAT – ALL JUNIORS WILL TAKE APRIL 10TH
- **STUDENT ATHLETE - REGISTER WITH NCAA – NOW!**
- VISIT YOUR TOP POST-SECONDARY PROGRAMS OR TAKE A VIRTUAL TOUR ON THEIR WEBSITE.



# RESOURCES FOR YOU

## **SAT/ACT PREP**

- MARCH2SUCCESS
- COLLEGEBOARD.ORG
- COLLEGE IN COLORADO
- KHAN ACADEMY
- ZAPS

## **COUNSELING WEBSITE**

- SCHOLARSHIP LINKS
- SPECIAL OPPORTUNITIES
- COURSE PLANNING GUIDE
- POWER POINTS FROM OUR PRESENTATIONS TO STUDENTS AND PARENTS

## **NAVIANCE**

- COLLEGE APPLICATIONS
- SCHOLARSHIPS
- RESUME BUILDER
- CAREER EXPLORATION
- VIRTUAL TOURS

## **YOUR COUNSELOR**

- YOU ARE ALWAYS WELCOME TO VISIT WITH YOUR COUNSELOR ABOUT OPTIONS!



MAKE YOUR SENIOR YEAR  
COUNT – REGISTRATION FEB  
2018

- **EXPLORE YOUR CAREER OPTIONS!**
- TAKE CLASSES RELATED TO YOUR DESIRED CAREER.
- EXAMPLES: INTRO TO ENGINEERING, AG CLASSES, PRO-START, MED PREP (WCCC), ETC.

- TAKE A **RIGOROUS COURSE LOAD** SO THAT YOU ARE BETTER PREPARED TO ENTER COLLEGE

(SO IT'S NOT A SHOCK WHEN YOU GET TO COLLEGE (GOING FROM AN EASY SENIOR SCHEDULE TO COLLEGE-LEVEL WORK))



## NAVIANCE INSTRUCTIONS

- GO TO THE FMHS WEBSITE
- SCROLL DOWN AND CLICK ON THE NAVIANCE LINK ON THE LEFT
- SIGN IN WITH YOUR STUDENT VUE USERNAME AND PASSWORD
- CLICK ON THE *ABOUT ME* TAB AND THEN ON THE *PROFILE* LINK
- ADD YOUR EMAIL AND BIRTH DATE HERE.
- CLICK ON *ABOUT ME* TAB AND THEN ON *GOALS*— YOU WILL BE PROMPTED TO SELECT A GOAL TO EDIT. PLEASE TAKE SOME TIME TO CREATE A *PWR* GOAL  
(*PWR = POST-SECONDARY AND WORKFORCE READINESS*)



# NAVIANCE (CONT.)

- GO TO COLLEGES TAB
- SELECT SUPERMATCH
- PUT IN INFORMATION RELATED TO WHAT YOU WANT TO DO FOR COLLEGE MAJOR/CAREER PATH/CERTIFICATE.
- EXPLORE ONE COLLEGE OR TRADE SCHOOL (LOOK AT VIRTUAL TOUR, GO TO WEBSITE, ETC.)
- FILL OUT SURVEY LISTED UNDER THE ABOUT ME TAB (LEFT SIDE) (COLLEGE/CAREER EXPERIENCE)

# QUESTIONS



# Colorado Career Cluster Model

## Business, Marketing, & Public Admin

### \*Management & Admin

Admin Services, Business Info Tech, Corporate/General Mgt, Human Resource Mgt, Operations Mgt

### \*Marketing

Marketing Communications /Mgt/Research, Merchandising, Sales

### \*Finance

Accounting, Banking, Corp. Finance, Insurance, Investment

### \*Government & Public Admin

Foreign Ser, Legal Services, Planning, Public Admin, Regulation, Taxation

## Health Science, Criminal Justice, & Public Safety

### \*Health Science

Biotechnology, Diagnostic Services, Health Informatics, Supportive Services, Therapeutic Services

### \*Law, Public Safety, Corrections & Security

Correction Services, Emergency & Fire Services, Law Enforcement, Security and Protection

## Skilled Trades & Tech Sciences

### \*Architecture & Construction

Construction, Design, Maint. & Operations

### \*Manufacturing

Health & Safety, Inventory, Production, Maint. & Install, Quality Assurance

### \*Transportation, Distribution & Logistics

Equip Maint., Logistics, Sales, Warehousing, Operations

## Postsecondary & Workforce Readiness

Foundation knowledge & skills for all career pathways

\*Academic Content Knowledge, Civic Responsibility, Collaboration, Communication, Creativity, Problem Solving, Personal Responsibility

## STEM, Arts, Design & Info Technology

### \*STEM(Science, Tech, Engineering, Math)

Research, Exploration & Innovation, Design, Development, & Application

### \*Arts, A/V Tech & Communication

A/V & Film, Journalism, Broadcasting, Performing/Visual Arts, Printing /Publishing

### \*Information Tech

Info Support/Services, Interactive Media, Network Sys, Programming/Software

## Hospitality, Human Services & Education

### \*Hospitality & Tourism

Lodging, Recreation, Food & Beverage Services, Travel/Tourism

### \*Human Resources

Consumer Services, Counseling/Mental Health, Early Childhood Dev., Family/Community Services, Personal Care Services

### \*Education & Training

Admin Support, Professional Support Services, Teaching/Training

## Agriculture, Natural Resources & Energy

### \*Agriculture, Food & Natural Resources

Animal Sci, Agribusiness Sys, Food Products & Processing, Natural Resource & Environmental Sys, Plant Sci, Power, Structure & Tech Sys

### \*Energy

Electromech. Generation & Maint., Electrical Energy Trans & Distrib., Energy Efficiency & Environmental Tech, Fossil Energy Extraction, Processing, Renewable Energy

## In Course Guide on FMHS Website:

### Career Pathways...Connecting Your High School Classes to Careers!

Many of the courses are color-coded to reflect the career pathways that classes fit into. Keep in mind that many classes fit into multiple career pathways. We encourage all students to think about their career interests, and to choose classes that are connected to their future.

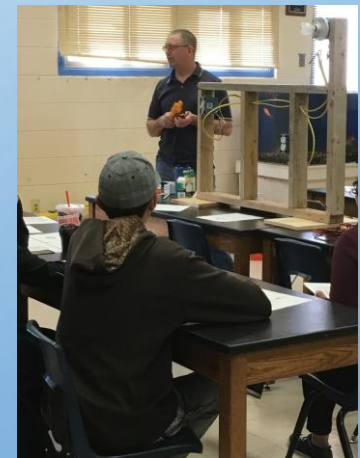
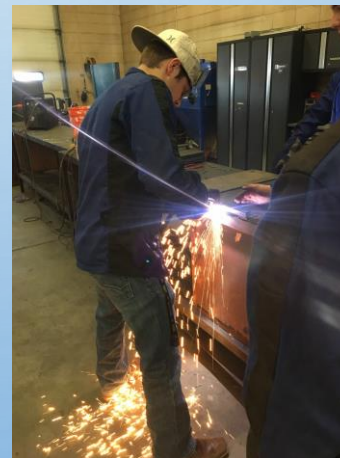
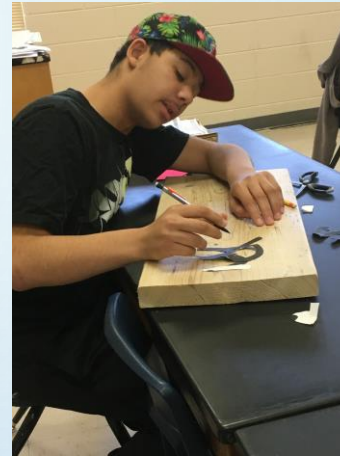
Foundation Knowledge and Skills – 	.....	Required Core Classes
Agricultural and Natural Resource – 	.....	Agriculture, energy, mining
Business and Public Administration – 	.....	Business, management, legal, banking, insurance
Health Sciences and Public Safety – 	.....	Medical field, law enforcement
Hospitality, Human Services and Education – 	.....	Travel, tourism, teaching, counseling, mental health
Science, Technology, Engineering, Math, Art, Design and Informational technology – 	.....	Performing arts, science, computers, math, engineering
Skilled Trades and Technical Services – 	.....	Construction, manufacturing, transportation

# THE AG DEPARTMENT

## WHAT WE DO:

- RELATES TO REAL WORLD EXPERIENCES
- FUN HANDS-ON PROJECTS
- NICE TEACHERS IN A GREAT LEARNING ENVIRONMENT
- CREDITS CAN COUNT FOR SOME REQUIRED CREDITS

FIND YOUR PASSION, DO WHAT YOU LOVE!



# Registration talking points:

- Full Schedule** - at least six classes per semester.
- Financial Literacy #** - Economics, Personal Finance, Life Management, Ag Business Mgmt, AP Microeconomics
- Grade replacement** - check transcript
- HEAR requirements** (previous slide)
- Athletic Eligibility** - NCAA approved classes
- Releases** - 2 allowed each semester (1,8,1/2, 7/8) *\*\* unless WCCC or if you have Seminary in your schedule\*\**
- Senior options** - concurrent, high school scholars (must have 3.0 GPA to signup), 090 CMU Developmental classes
- No study hall for seniors**
- Tutor mentor, peer tutor, aide**
  - Can use for volunteer hours to earl letter and/or Abbey Cord.
  - Can only be listed as alternates, until position is secured and paperwork completed.
- AP classes**- put some rigor in your schedule - prepare for college.

## **New classes in 2017-18 year**

- AP Computer Science Principals-Hayward & Sommerville
- Tech math- Rutkowski (combined with Ag, Engineering, Business classes)
- Women's Studies - Parentice
- AP Seminar/AP Research (AP Capstone) - Miller
- Applications of Statistics
- World Literature
- AP Art History - Sturrock
- AP Comparative Government - Crabtree
- Advanced Astronomy - Garske
- FBLA Leadership (must be in FBLA)– Recker